

# AIR BOX FIRE DETECTOR



The air box fire detector uses an optical sensor for the detection of fire in the air box. The sensor output toggles between two states – LOW and HIGH. When the light intensity is above the threshold level the output goes HIGH.

## Electrical

- Supply voltage 8 to 16V unregulated
- Supply current <20mA
- Reverse polarity protection
- Output voltage HIGH=4.0±0.1V, LOW=1.0±0.1V
- Optimum detection angle = 6°
- Turn-on threshold at 25°C = 0.25mW/cm<sup>2</sup>
- Peak Response = 880nm

## Cable and Connection Definition

- 26AWG un-screened cable
- Cable length is shown on the order details but any length is available on request
- Various automotive and military standard connectors are available
- Connection
 

Red wire	Supply
White wire	Signal
Blue wire	Ground

## Application

- Fire detection in the air box

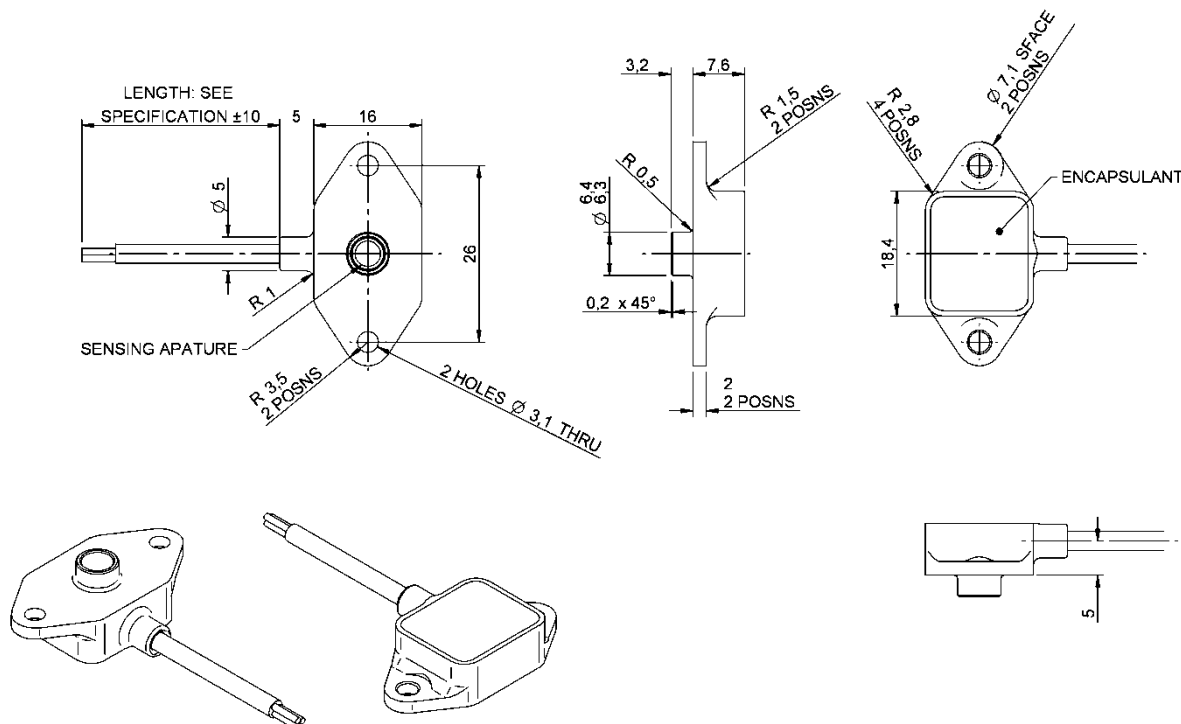
## Mechanical

- Aluminium alloy body, hard anodised and dyed black
- Integral cable boss
- Weight less than 30g (including cable)

Design and manufacture is in-house, so if our existing designs do not suit your application, we can provide cost effective customised parts to suit even the most demanding application. No engineering charges are made for simple modifications such as customer specific connectors, cable protection and cable lengths. Please contact our technical consultancy service who will be pleased to help.

## Environmental

- Resistant to standard motorsport fluids
- Maximum humidity 100%
- Operating temperature 0 to +100°C
- Vibration 100 to 1000Hz, 24hrs per axis
- DR25 jacketed cable



**Cable Length**  
1000mm

**Order Code**  
O 030 300 034 000